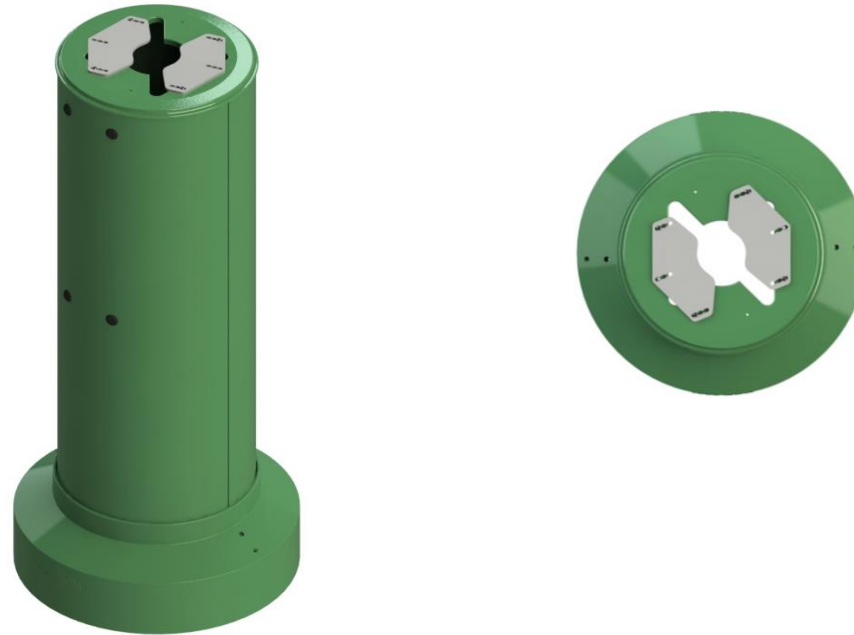


MCM™ Harmonization base-cover

Specification sheet **CBH**

« Modern » style**



Standards colors : BL1-TX (Black); BG3-TX (Blue green); FG2-TX (Forest green); OG1-TX (Olive green); JD2-TX (Jade green); BR1-TX (Bronze).

Note: All paints are textured (TX)

SECTION SPECIFICATION		----- TO BE COMPLETED BY INSTALLER AND VERIFIED BY ENGINEER			
Qty	Model and options number			Code & colour	Remarks
Example: 0	CBH			BL1-TX Textured black	

** For "Classic" style option, contact MCM Structures to enquire about availability.

To contact us or for more information about our product, visit www.mcmstructures.com

MCM™ Harmonization base-cover

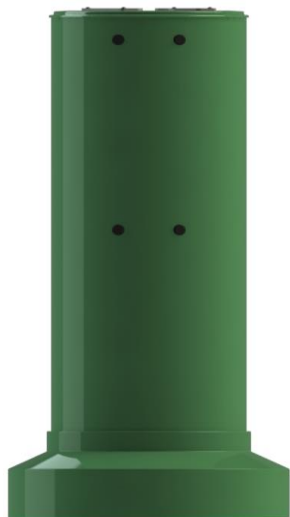
Specification sheet CBH / General"

MCM™ base cover is a device to be added at the bottom of a lamp post to harmonize it with other nearby lamp posts, which are equipped with MCM Base™ or MCM Retrofit Base™.

NOTE : No electrical or grounding connection included

MCM Base cover is composed of:

- Two (2) painted aluminium half cylinders assembled around the lower part of an existing lamp post;
- Two (2) bare aluminium fixture plates with four (4) stainless steel 1/4-20 screws;
- Two (2) painted aluminium half bumpers with one (1) stainless steel 1/4-20 screw



Overall dimensions (no bumper) :

Height: 1340 mm (52,75") overall ; Dia.: 445 mm (17,5") at mid height

Weight: Around 20 kg (50 lb).

Materials: Half cylinders : aluminium 3 mm (1/8"), Bumper : cast aluminium 6 mm (1/4")

Finishes: Base cover and bumper : epoxy primer and super durable polyester finish, ei textured or smooth (Test 2000 hrs) choice of colour

Installation: The base cover is attached to the ground, or to the lamp post, using screws or rods (not included). The two half cylinders are joined together using the two bare aluminium fixture plates and

Notes : The bumpers have to be installed so their axis is parallel to the street.

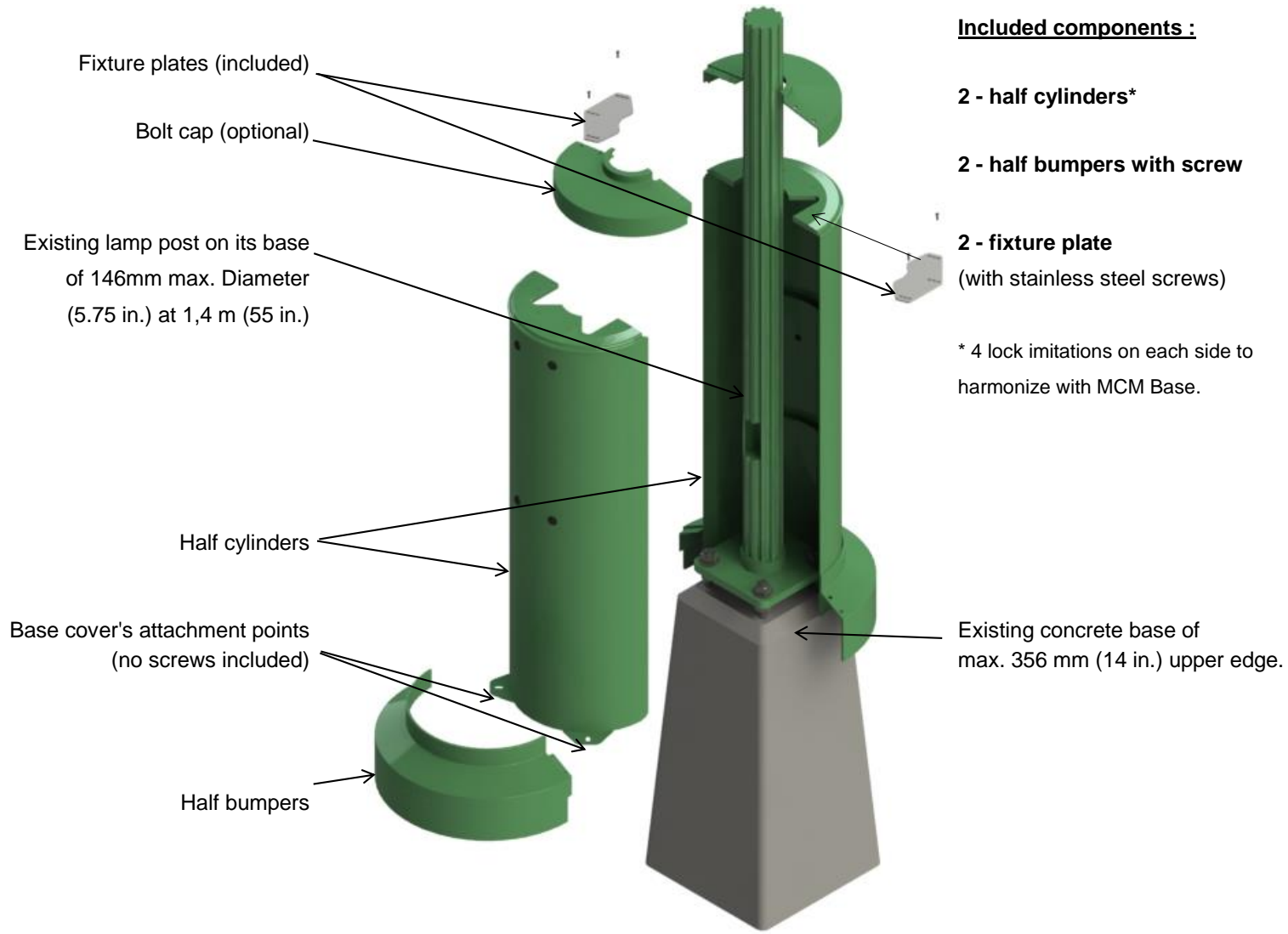
See our website for more technical information:

<http://mcmstructures.com/en/documentation/technical-documentation/>

MCM Structures 8585, boul. St-Laurent, office 220, Montréal, QC, H2P 2M9
Tel.: 514 481-9191 / Fax.: 514 274-0284 / www.mcmstructures.com

MCM™ Harmonization base-cover

Specification sheet CBH / Installation and components"



MCM™ Harmonization base-cover

Specification sheet CBH / Attachment to the lamp post

**Install the fixture plates using the included screws, as to join together the half cylinders, and to hold firmly onto the lamp post.
(Use symmetrical positions when passing the screws through the fixture plates' holes to ensure the base cover is well centered around the post.)**

